

Alaska Department of Fish and Game

Habitat Section
Southeast Region



106-22-10080 Tributary 7

ADDITION

Water body name: Weaver Brook

Survey date: 8/25/2025

Quad: Petersburg A-2

Species & Lifestage:

Upper Reach Latitude: 56.177293 **Longitude:** -132.566077

Survey crew: TE, NJ

Lower Reach Latitude: 56.177182 **Longitude:** -132.568482

Findings: We surveyed this uncataloged stream from the road using a backpack electrofisher, baited minnow traps and GPS and captured juvenile coho salmon and Dolly Varden. This stream crosses the road via a 5 ft corrugated metal culvert that is perched 1.5 ft at the outlet. The pipe has minimal flow without any fill material inside and is likely a barrier to fish passage.

Downstream of the culvert, the stream has large gravel and cobble substrate and provides quality juvenile fish rearing habitat with woody debris and side pools throughout. About 100 ft upstream of the road crossing, there's a bedrock cascade that is also likely a barrier to fish passage. Only resident fish caught upstream of the perched culvert (Table 1; Figures 1–3).

Recommendations: Add this uncataloged stream to the anadromous waters catalog up to waypoint 1008 for rearing coho salmon and add a barrier point at waypoint 1031 (Figure 4).

Nomination: Pending

Table 1.–106-22-10080 Tributary 7 survey data.

Waypoint	Latitude	Longitude	Notes	Stream Width ft	Stream Substrate	Habitat Features	Gradient %	Sample Effort	Sample Results
1008	56.177249	-132.566242	Setting minnow trap in plunge pool. Resetting upstream of pipe. 5ft corrugated metal pipe with flow throughout, perched about 1.5 feet with plunge pool. Large cobbles and gravel downstream, channel approximately 10 feet wide.	8-10	Large Gravel Cobble		2-4	MT	7 CO 2 DV
1031	56.177448	-132.566144	Small bedrock falls. Over 30% for 10 feet. Downstream is a mix of shale and bedrock surface with small step pools leading down to inlet of pipe. Incised channels with small woody throughout. Only resident fish above.	8-10	Cobble Bedrock	Incised Channel SWD	4-6	EF	2 DV



Figure 1.—Juvenile coho salmon and Dolly Varden caught at waypoint 1008.



Figure 2.—Channel flowing through perched culvert at 1008.



Figure 3.—Bedrock cascade at waypoint 1031.

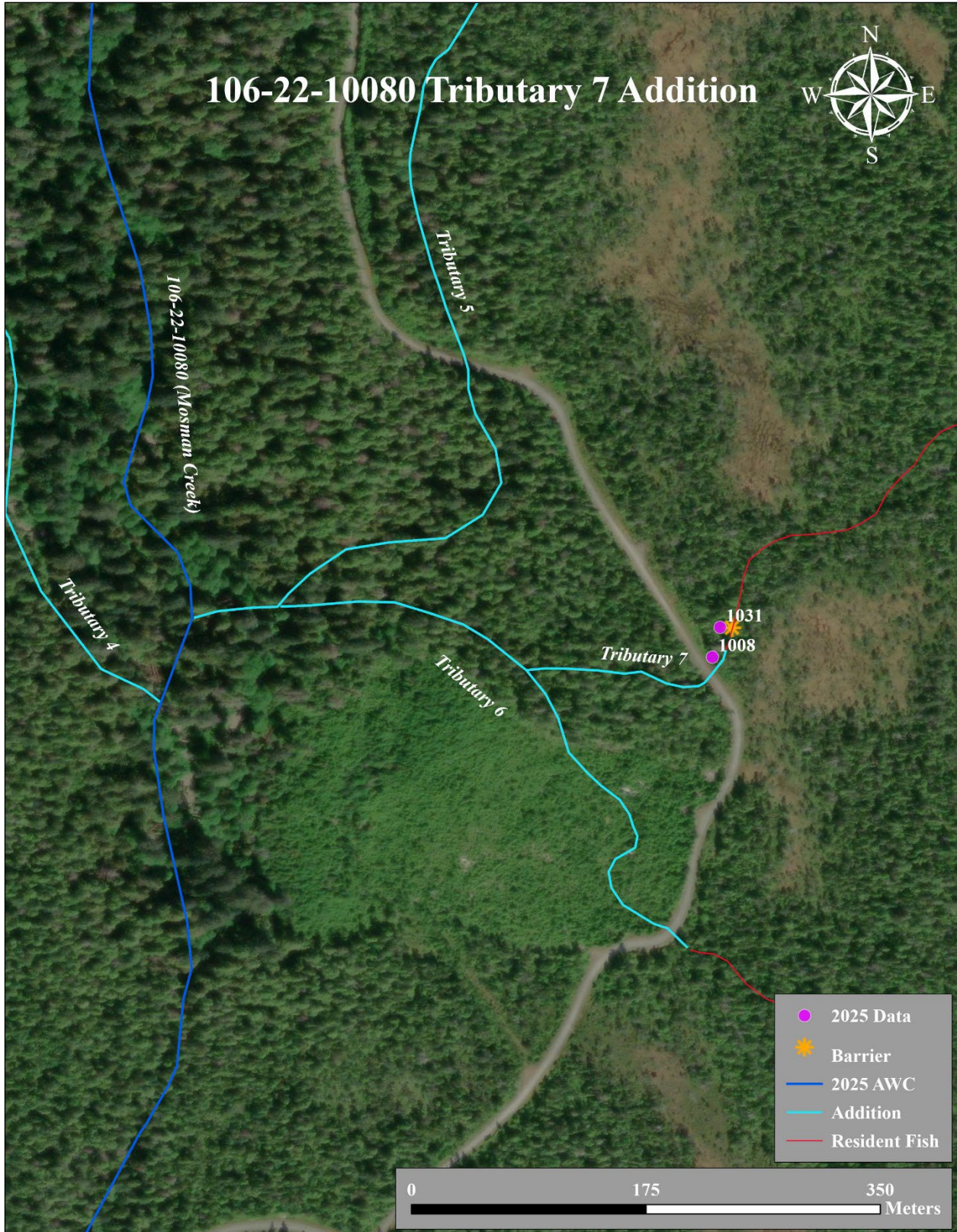


Figure 4.—106-22-10080 Tributary 7 Addition map.